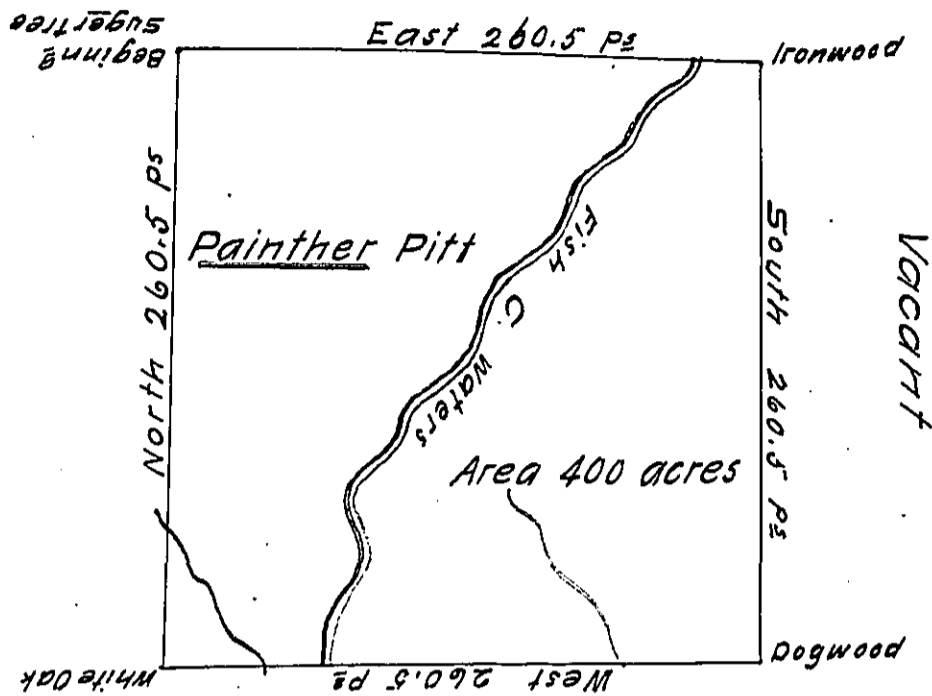


Saml Douglass



The above is a draught of a survey made Dec 18th 1784 in pursuance of a warrant granted to Samuel McLean dated the 13th day of September 1784 situated on the waters of Fish Creek adjoining lands of Samuel Dougless in Washington County called Painter Pitt containing four hundred acres with the usual allowance of six per cent for roads.

David Redick D.S.

John Lukens Esq^r S. G^r

IN TESTIMONY that the above is a copy of the original remaining on file in the Department of Internal Affairs of Pennsylvania, made conformably to an Act of Assembly approved the 16th day of February, 1833, I have hereunto set my Hand and caused the Seal of said Department to be affixed at Harrisburg, this eleventh day of June 1912

Henry Horch
Secretary of Internal Affairs.